

intraLibrary™

The digital resource library for schools networks



The digital resources challenge for schools

Easier access and discovery.
More sharing. Better management.

Teachers need access to good digital learning resources

All teachers value good learning resources to give their pupils the best learning experience possible. A wide range of digital resources is potentially available to most teachers, but they often have no way of discovering or accessing them as highlighted recently by European Schoolnet:

“The value of access to good interactive digital content is essential for the successful implementation of ICT. The lack of access to appropriate digital contentwas identified as a major barrier for ICT use in schools”.

Source: EUN Schoolnet report: The ICT impact on schools in Europe, January 2007.

An independent and future-proof approach is needed

Digital learning resources can range from lesson plans and worksheets through images, presentations, audio and video, to fully interactive e-learning materials.

What is required is a solution that enables all this material to be accessed, managed and shared independently of any other learning system, such as a learning platform, whilst being easily integrated into any current or future learning system.





VLE solutions are only one part of the equation

Many schools, Local Authorities (LAs) and Regional Broadband Consortia (RBCs) are currently rolling out learning platforms, often built largely around a specific Virtual Learning Environment (VLE).

VLE's are designed to help organise pupil's work, and enable teachers to direct pupils to resources.

However, they aren't necessarily designed as a solution for supporting teachers in their work, discovering resources that are useful to them or sharing these resources with their colleagues.

One size doesn't "fit all"

There are also a range of factors which affect which VLE is employed in a particular school, with no single solution able to meet every schools needs. Typically decisions on VLE selection are made at all different levels of the schools hierarchy, from individual schools themselves to LEAs, RBCs, the government and its agencies.

Which means schools within a single region can very often end up applying a range of different VLEs at the same time. This approach is problematic as these systems do not generally interoperate well. It can also be extremely difficult, time consuming and costly to continually move content from one to the other on a day-to-day basis using your existing infrastructure.

Managing your resources is even more of an issue should you decide to change your VLE solution at some point in the future.

Separating content management from delivery

So what is the solution?

For the long term viability of electronic learning and digital resource management in schools, it is imperative to separate out content management from delivery, which means maintaining digital learning resources outside of any specific learning delivery systems including VLEs.

Intrallect's intraLibrary is a strategic solution which is specifically designed for this purpose. A solution that can be deployed effectively at a regional level, whilst at the same time allowing individual schools the flexibility to integrate intraLibrary with their existing ICT infrastructure including VLEs and school web portals.

Introducing intraLibrary

Putting digital learning resources in the hands of those who need them

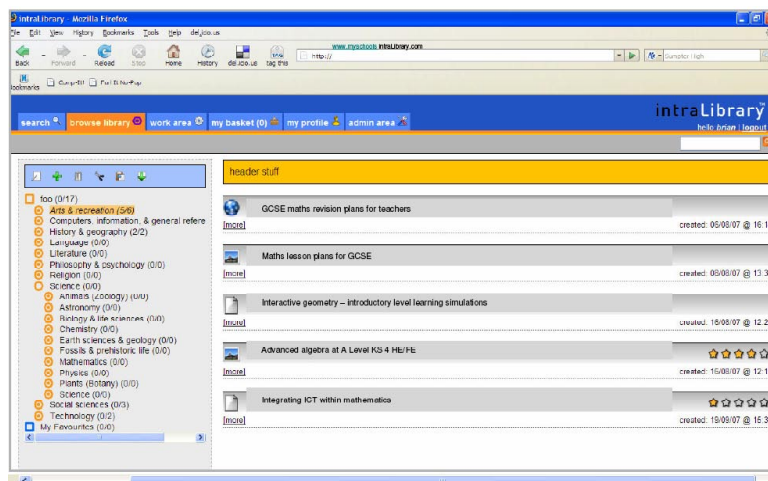
Intraclect's intraLibrary software is a system for discovering, sharing, accessing and managing digital learning resources in schools. It supports the full range of content types, including documents, images, multimedia and interactive content which conforms to the SCORM standard. It can be easily integrated into the VLE systems commonly used in schools, including Moodle, Fronter and Kaleidos.

A transition tool

IntraLibrary is not a VLE. It is a library for digital resources. It enables digital materials to be managed and shared independently of the VLE, whilst making them available to users of the VLE through an open, standards based interface.

By removing the management of digital resources from any delivery technology, intraLibrary puts the power in the hands of the teacher to use digital resources where and when necessary – in class, on an electronic whiteboard, on a computer during group work, in a VLE for individual study and in many more instances.

IntraLibrary simplifies using content in VLEs, migrating between VLEs and using multiple VLEs simultaneously. It is also just as simple to use the same content in other tools like blogs or wikis or project websites.





IntraLibrary can be used to share:

- Lesson plans
- Presentations
- Online learning materials
- Images
- Whiteboard content
- Podcasts
- Movie and animation files
- Favourite web resources
- Complex SCORM & IMS packages

In fact - any digital file format required

Comprehensive support for all pedagogies

Crucially the resources stored in intraLibrary can be used in a wide range of learning scenarios including:

- Face-to-face**, classroom based teaching
- Online learning** environments or VLEs
- Other commonly used tools** including blogs, wikis, forums and newsreaders

Personalise intraLibrary to meet specific teachers needs

Teachers can customise intraLibrary to reflect the way they prefer to work including:

Saved searches: save favourite searches for future use

Tagging favourite content: use My favourites to tag useful content

Personalised RSS news feeds: let intraLibrary automatically inform you when new content of interest is published

Select tools of their choice: intraLibrary lets teachers work with the elearning and desktop tools that suit them

Collaborate with peers. Improve the quality of learning resources

intraLibrary enables teachers to create and share learning materials within and between individual schools. This helps prevent “reinventing the wheel” or constantly creating content that already exists elsewhere. Groups of teachers can also contribute to shared collections and develop sharing communities.

The ability to provide “star” ratings and comments for specific items also encourages peer review and the constant improvement of these learning resources in the shared library.

A strategic solution

For schools, educational authorities and their partners

intraLibrary delivers real strategic benefits for a wide range of educational stakeholders from teachers to education authorities including:

Provides a framework to deliver and support high quality teaching

intraLibrary helps provide a framework which allows teachers to deliver high quality teaching by providing quick and easy online access to validated, curriculum mapped resources that directly impact teaching activities.

Encourages the building of sharing communities in schools

intraLibrary engenders the sharing of best practice amongst teaching colleagues, both within and between schools. By allowing teachers to access, evaluate and further develop learning materials created not only by their peers, but also by commercial content providers.

Independent, flexible and future-proof

As intraLibrary effectively separates content management from delivery, it provides the flexibility to support multiple VLEs now and in the future. This allows individual schools, LEAs and RBCs within a school region to choose the VLE that most closely meets their own needs and avoids the limitations of a "one size fits all" approach.



Highly customisable to the needs of the local educational community

intraLibrary can quickly and easily be customised to meet specific educational needs through:

Curriculum mapping - Content mapped to, and browsable by, the local curriculum

Customisable workflows - Customisable content submission workflows for content administrators and other key stakeholders

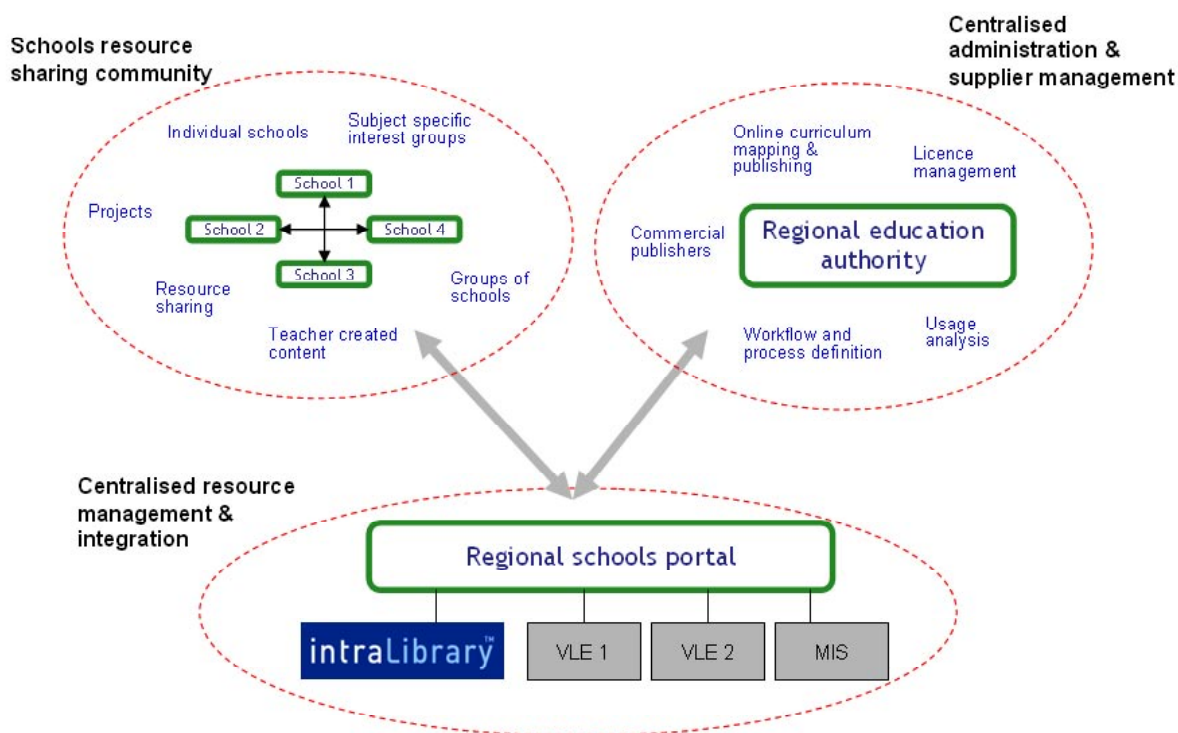
Languages - Multi-language capability within a single implementation of intraLibrary including localised interface and metadata

Supports a portal based approach to delivering schools content

intraLibrary provides the opportunity to develop a portal based approach to managing and delivering content across groups of schools, regions and also at different educational levels.

Flexibility to deliver targeted content to specific audiences within schools

The collections management capability in intraLibrary makes it quick and easy to target audiences with specific interests. For example, by creating a shared area for French history teachers in a region or a specific ICT project group.



Provides online, centralised and effective management of digital resources

intraLibrary makes the management of resources easier and more efficient including:

- Content classification, submission and publishing processes including customisable workflows

- Administration and management of content licence requirements

- Content usage reporting and analysis

Simplifies collaboration with commercial content publishers

intraLibrary also provides a streamlined and cost effective way to distribute "paid for" commercial learning materials direct from publishers using appropriate access controls, workflow and release management processes.

For more information on the benefits of implementing intraLibrary in conjunction with educational content publishers please see our intraLibrary Delivering Digital Content for School Portals factsheet.

An open and proven solution

Integrated, interoperable, standards based.

intraLibrary is designed to integrate with existing school infrastructures and technologies. It has a number of key technical benefits including:

Accredited under the BECTA Learning Platform Framework

Intrallect has passed the Becta Learning Platform Services Framework requirements.

Full compliance with other industry standards

Intrallect is fully committed to compliance with industry standards and in particular:

Extensive support for metadata standards including IEEE LOM

Digital formats including SCORM 1.2 and 2004

OAI-PMH, SRU/SRW, ODRL, JISC SWORD, Atom Publishing Protocol

The company is an active member of IMS and the BECTA working group on Learning Platform Services.

Supports VLE integration

intraLibrary integrates with industry standard schools VLE technology such as Fronter, Moodle, Its Learning, Blackboard Vista etc .

Fully interoperable with other elearning tools and desktop applications

Intrallect takes an open approach to developing intraLibrary and the intraLibrary Connect web services suite provides integration with a wide range of tools including:

Blogs, wikis and forums

Existing web portals

Newsreaders & RSS news feeds

Content authoring tools

Library management systems

Other standard tools – (see the **intraLibrary Connect factsheet** for more detailed information)

Highly scalable solution

intraLibrary is a highly scalable solution which allows administrators to add new users quickly and easily as organisational requirements change. From a few schools to a national service, intraLibrary is a proven technology.

No software plug-ins required

Teachers do not have to download any plug-ins to install intraLibrary which is completely accessible via standard web browsers on all platforms (PC, Mac, Unix).

Searchable from existing external portals

intraLibrary provides the flexibility to deliver searches directly from existing external web portals and intranet/internet sites by simply embedding search capability in these sites.

Support for authentication systems including LDAP

intraLibrary provides support for several authentication systems including LDAP.





intraLibrary™

A proven solution. Backed by extensive industry expertise

intraLibrary is a proven digital library solution that has been specifically designed to meet the needs of teachers and school administrators. Our solutions are used in schools, universities, colleges and businesses worldwide and our staff are recognised as experts in the industry.

And specialist implementation consultancy

Intrallect has extensive experience of implementing large scale digital library solutions in the education sector. intraLibrary is backed by a range of services including content migration, development of classification systems and solution development services.

For more information on intraLibrary for schools call us on +44 (0) 870 234 3933 or email enquiries@intrallect.com



Intrallect Ltd
Regent House
Blackness Road
Linlithgow
EH49 7HU
Scotland, U.K.

Tel. +44 (0) 870 234 3933
Fax. +44 (0) 1506 670 922
Email. enquiries@intrallect.com
www.intrallect.com